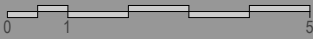


# STAMBENA ZGRADA

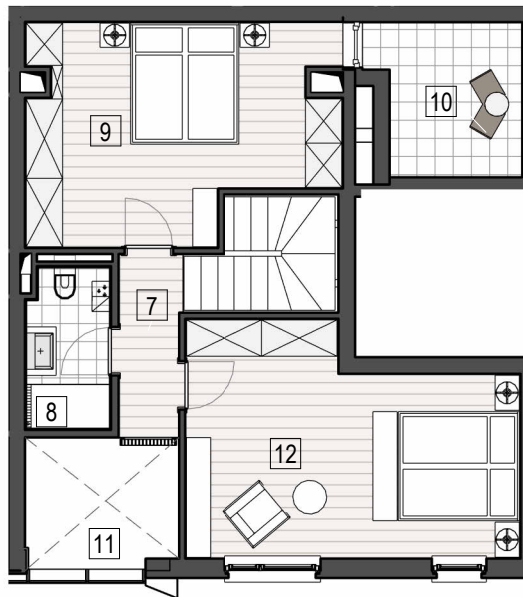
Građevna cjelina „H“ UPU Stambene zone „Mocire“, Zadar, k.č.br. 1030/3, k.o. Zadar



katalog stanova



## DONJA ETAŽA



## GORNJA ETAŽA



4. KAT



SB-PROJEKTIRANJE d.o.o.  
Horvatovac 84a, Zagreb  
sbprojektiranje@sbprojektiranje.com

SIGMA MOCIRE d.o.o.  
Gradišćanska ulica 24, Zagreb

Informacije i prodaja:  
Tel: +385 99 3681 794  
Tel: +385 98 1676 692  
e-mail: prodaja@sigma-zadar.hr  
www.sigma.hr

## neto površine 4-sobni stan

| Br     | Prostorija             | NP                    | K    | NKP                   |
|--------|------------------------|-----------------------|------|-----------------------|
| H 4.21 |                        |                       |      |                       |
| 1      | Ulaz                   | 2,72 m <sup>2</sup>   | 1    | 2,72 m <sup>2</sup>   |
| 2      | Kupaonica 1            | 3,80 m <sup>2</sup>   | 1    | 3,80 m <sup>2</sup>   |
| 3      | Kuhinja                | 5,15 m <sup>2</sup>   | 1    | 5,15 m <sup>2</sup>   |
| 4      | Dnevni boravak + blag. | 23,19 m <sup>2</sup>  | 1    | 23,19 m <sup>2</sup>  |
| 6      | Soba                   | 11,23 m <sup>2</sup>  | 1    | 11,23 m <sup>2</sup>  |
| 7      | Hodnik i stubište      | 7,45 m <sup>2</sup>   | 1    | 7,45 m <sup>2</sup>   |
| 8      | Kupaonica 2            | 3,87 m <sup>2</sup>   | 1    | 3,87 m <sup>2</sup>   |
| 9      | Spavaća soba           | 17,32 m <sup>2</sup>  | 1    | 17,32 m <sup>2</sup>  |
| 11     | Galerija               | 5,49 m <sup>2</sup>   | 0,5  | 2,75 m <sup>2</sup>   |
| 12     | Soba                   | 19,25 m <sup>2</sup>  | 1    | 19,25 m <sup>2</sup>  |
|        |                        | 99,47 m <sup>2</sup>  |      | 96,73 m <sup>2</sup>  |
| 5a     | Loda                   | 3,26 m <sup>2</sup>   | 0,75 | 2,45 m <sup>2</sup>   |
| 5b     | Balkon                 | 2,24 m <sup>2</sup>   | 0,25 | 0,56 m <sup>2</sup>   |
| 10     | Terasa                 | 5,97 m <sup>2</sup>   | 0,25 | 1,49 m <sup>2</sup>   |
|        |                        | 11,47 m <sup>2</sup>  |      | 4,50 m <sup>2</sup>   |
|        |                        | 110,94 m <sup>2</sup> |      | 101,23 m <sup>2</sup> |

Oznaka stana:

**H 4.21**